

# Chemical-Washington Street Transmission Line Rebuild Project

Appalachian Power representatives plan to increase electric reliability by making upgrades in Kanawha County in West Virginia. Construction begins summer 2027 and concludes fall 2028.

### What

The project involves:

- Rebuilding approximately 2 miles of 46-kilovolt (kV) transmission line to 69-kV standards

This project is subject to approval by the Public Service Commission of West Virginia.

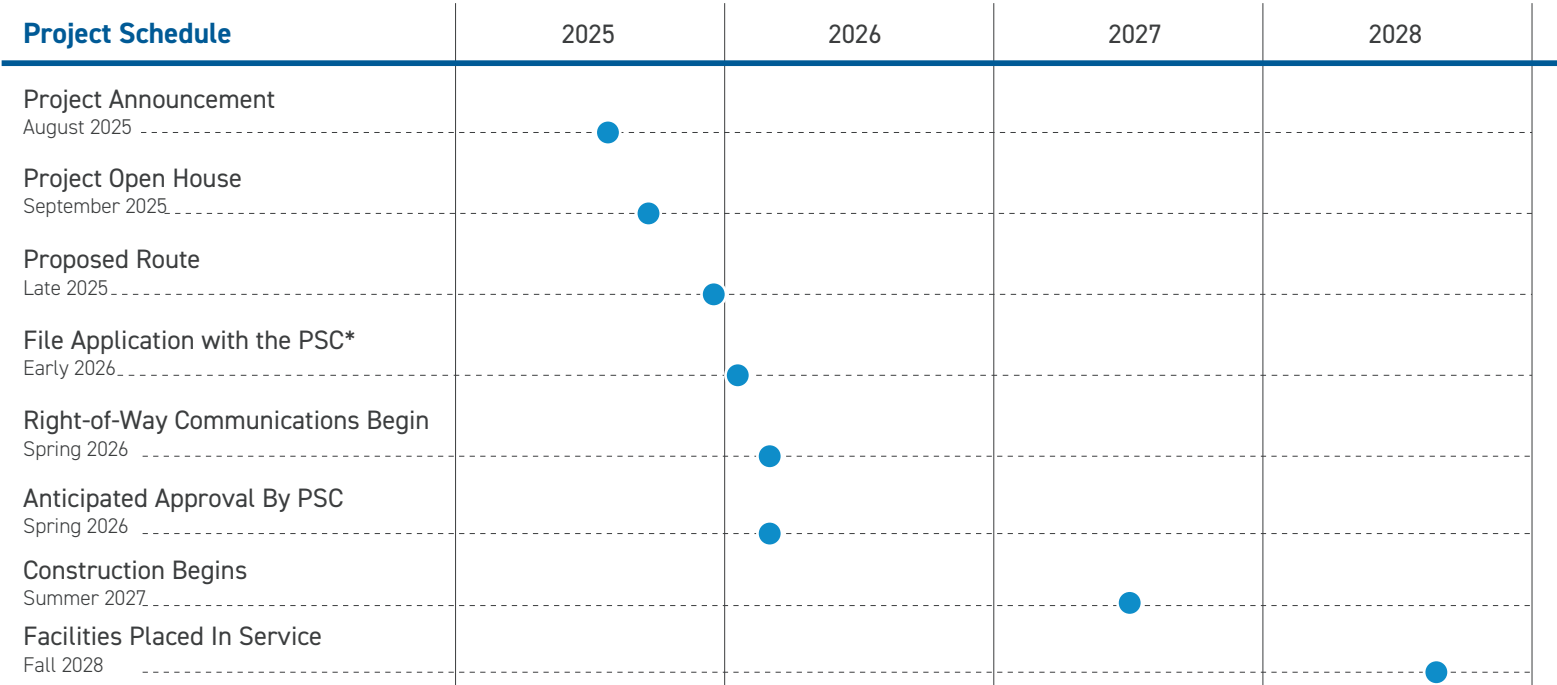
### Why

Project benefits include:

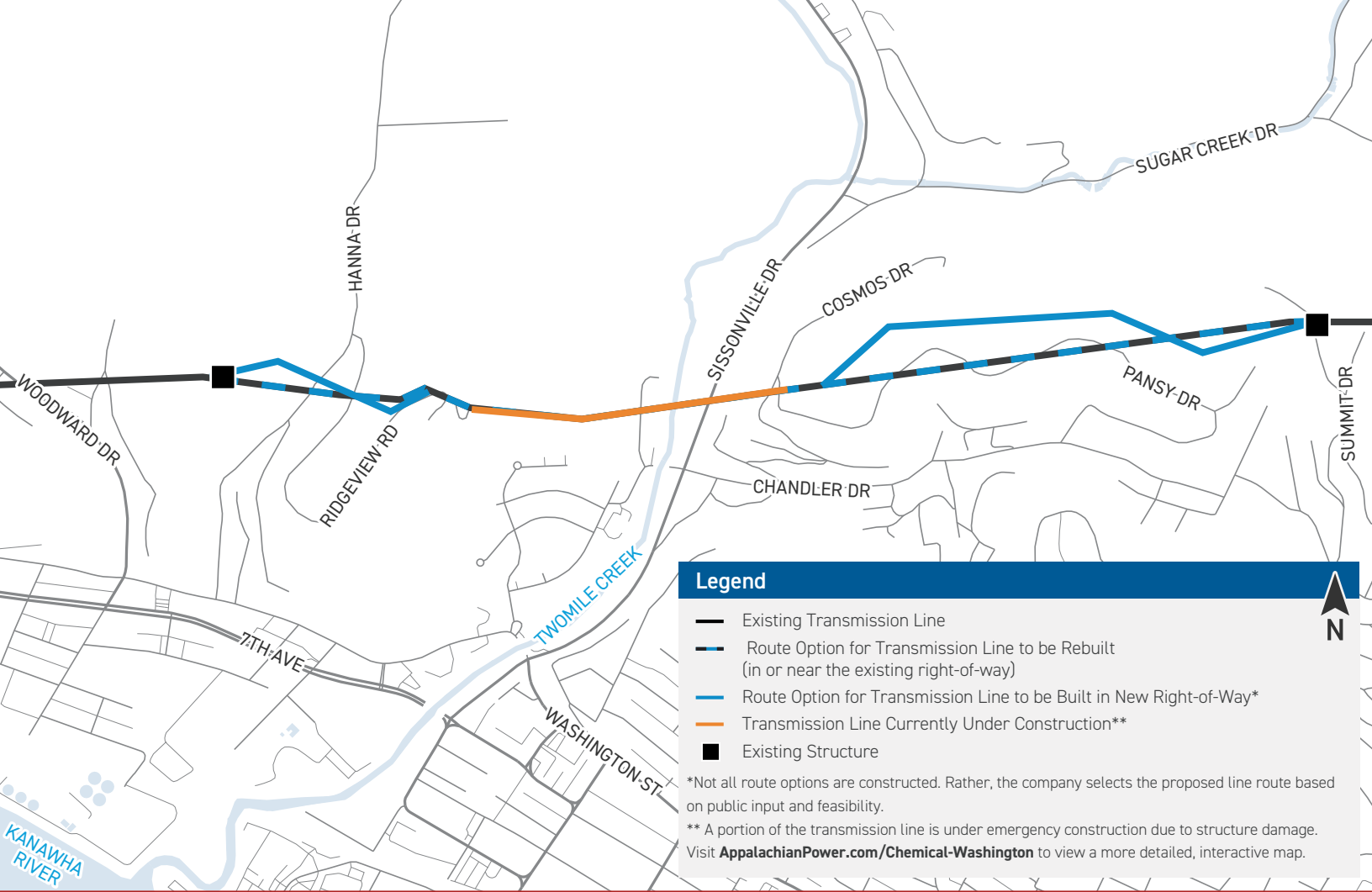
- Increasing electric reliability and reducing outages for area customers
- Replacing 1920s transmission lines with modern equipment capable of conducting a greater amount of electricity

### Where

The upgrades begin near Hanna Drive, travel east and end near Summit Drive in Charleston.



*\*The Public Service Commission of West Virginia (PSC) is the regulatory agency overseeing utilities operating in the state. \*\*Timeline subject to change.*

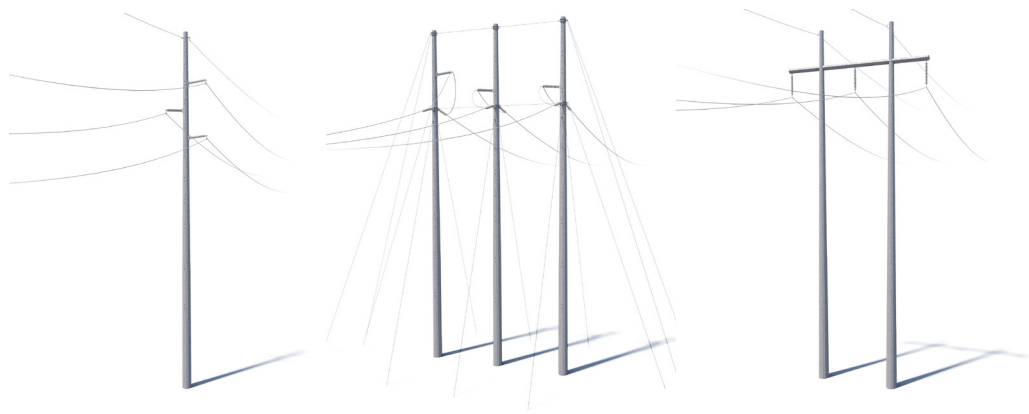


## Typical Structures

Appalachian Power crews plan to install steel single-pole, 3-pole and H-frame structures.

**Typical Structure Height:**  
Approximately 100 feet\*

**Typical Right-of-Way Width:**  
Approximately 100 feet



*\*Exact structure, height, and right-of-way requirements may vary depending on final line route and engineering.*



**We value your input. Please send comments and questions to:**

Jessica Lemons • Project Outreach Specialist  
[Apco\\_Outreach@aep.com](mailto:Apco_Outreach@aep.com) • 833-313-3743

08/18/2025