

Olive-Reynolds 345 kV Transmission Line Rebuild

Indiana Michigan Power (I&M) representatives plan to upgrade the transmission system for customers across western Indiana. The project involves rebuilding approximately 68 miles of power line in or near the existing right-of-way. Crews plan to begin construction in early 2027 and conclude by summer 2031.

What

The project involves:

- Rebuilding approximately 68 miles of 345-kV transmission line between Olive Substation off US Route 20 in New Carlisle and Reynolds Substation off N 25 E in Reynolds.
- Relocating approximately 2 miles of transmission line between State Road 16 and E Monon Road, east of Monon.
- Upgrading equipment at Olive Substation.

Why

The proposed project:

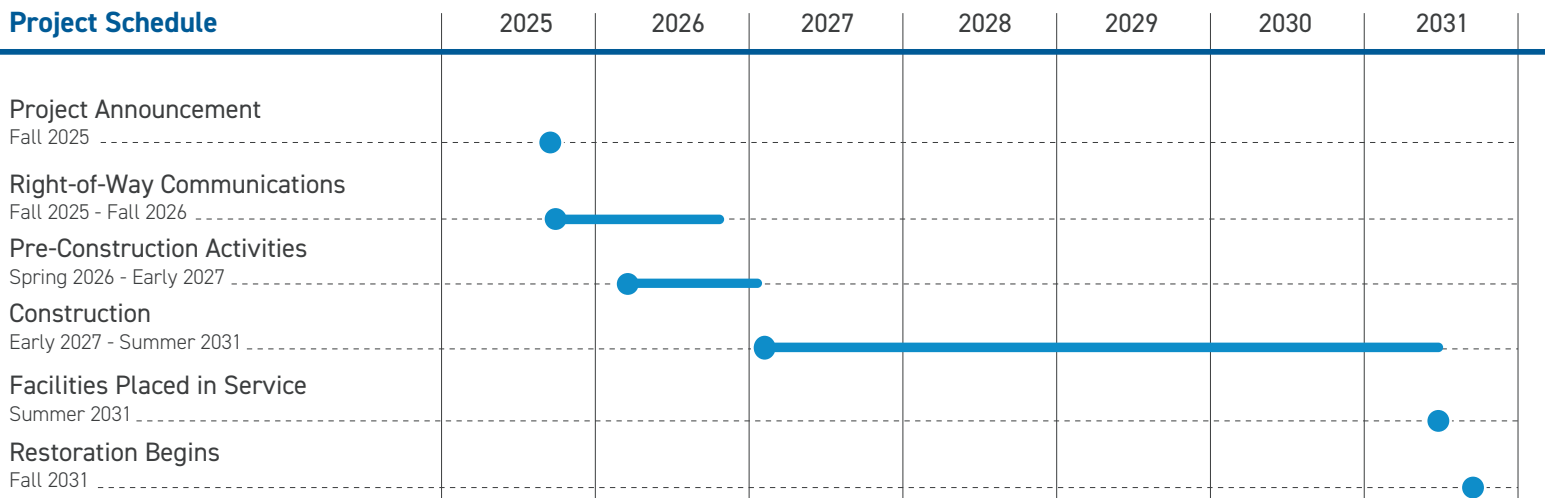
- Replaces aging infrastructure from the 1950s with modern steel structures.
- Improves the operational performance of the power line .
- Decreases the likelihood of larger, sustained community power outages.
- Ensures reliable energy delivery to the community.

Where

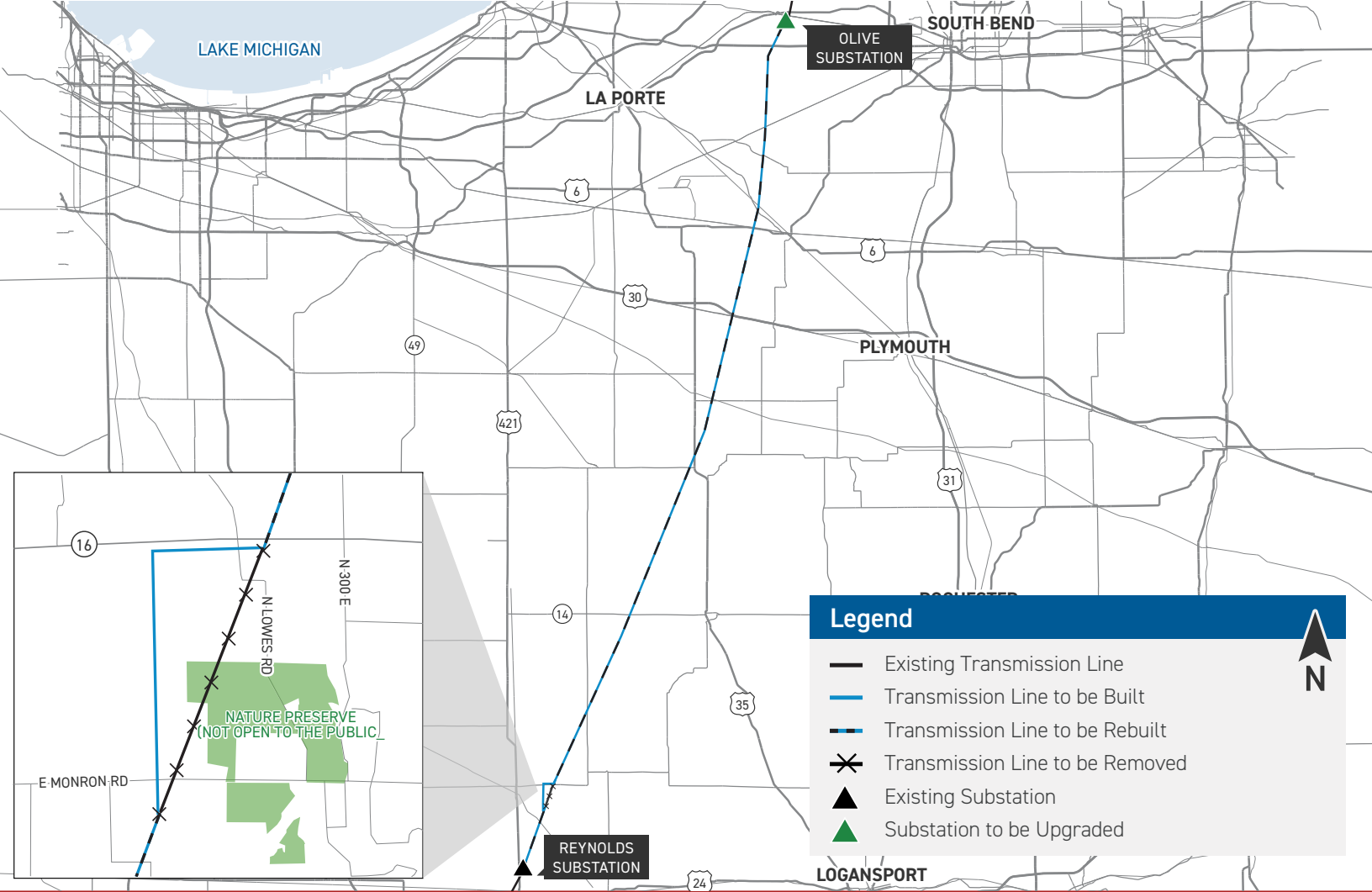
The project area includes:

- Olive and Lincoln townships in St. Joseph County.
- Wills, Lincoln and Johnson townships in LaPorte County.
- Oregon, Washington, Center and California townships in Starke County
- Franklin, Monroe, Jefferson and Beaver townships in Pulaski County.
- Monon and Honey Creek townships in White County.

Project Schedule



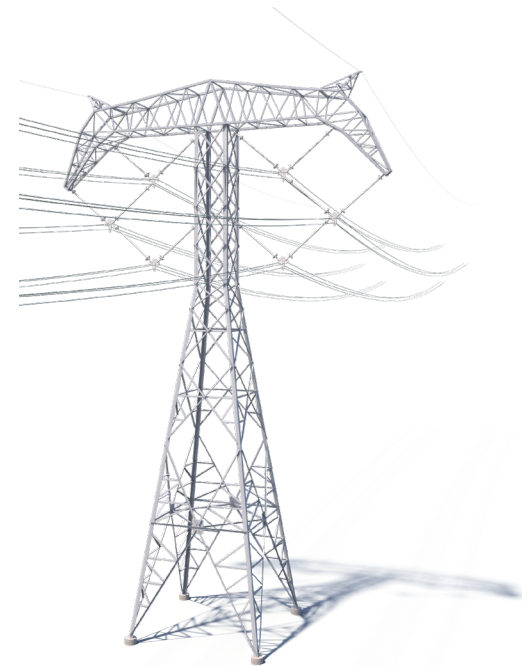
**Timeline subject to change.*



Typical Structures

I&M crews plan to install BOLD lattice structures.

Structure Height: Approximately 160 feet*
Right-of-Way Width: Approximately 150 feet*



**Exact structure, height, and right-of-way requirements may vary.*



We value your input. Please send comments and questions to:

WSP Representing AEP
Outreach@IMTransmission.com • 614-259-8201

IndianaMichiganPower.com/Olive-Reynolds

10/15/2025