

Corichi - Victoria Transmission Improvements Project

AEP Texas representatives plan to upgrade the electrical transmission system in Victoria, Wharton and Jackson counties. Crews plan to start construction in summer 2026 and conclude in fall 2027.

What

The project involves:

- Replacing approximately 4 miles of 138-Kilovolt (kV) line along the existing transmission line route between the Edna Substation and Victoria Substation.
- Rebuilding approximately 38 miles of 138-kV transmission line.
- Upgrading equipment at Corichi, Edna, Ganado and Victoria Substations

Why

The Corichi - Victoria Transmission Improvements Project:

- Ensures the reliability of electricity for area residents and businesses.
- Replaces wooden H-frame structures from the 1960's with modern steel pole structures to meet engineering and safety standards.
- Strengthens the system against severe weather impacts.

Where

The project area includes the cities of Victoria, Edna, Ganado and Louise.

Project Schedule

	2025	2026	2027
Project Announcement Spring 2025	●		
Right-of-Way Communications Begin Summer 2025	●		
Field Surveys Begin Summer 2025	●		
Pre-Construction Activities Begin			
<i>Corchi - Ganado</i> Spring 2026		●	
<i>Ganado - Edna</i> Spring 2026		●	
<i>Edna - Victoria</i> Spring 2027			●
Construction Begins			
<i>Corchi - Ganado</i> Summer 2026		●	
<i>Ganado - Edna</i> Summer 2026		●	
<i>Edna - Victoria</i> Summer 2027			●
Facilities Placed In-Service			
<i>Corchi - Ganado</i> Spring 2027			●
<i>Ganado - Edna</i> Spring 2027			●
<i>Edna - Victoria</i> Fall 2027			●
Right of Way Restoration Fall 2027			●

*Timeline subject to change.

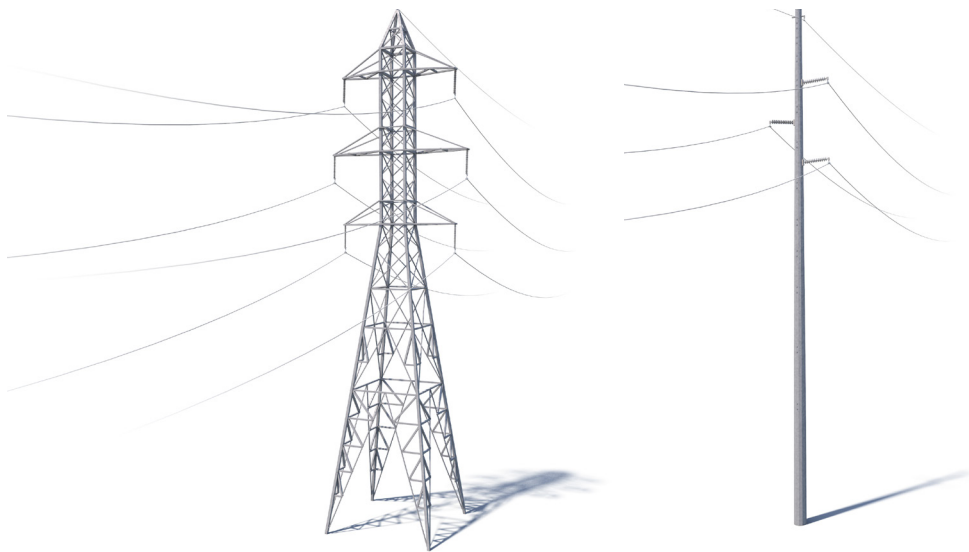


Typical Structures

Typical Structure Height:
approximately 100 feet*

Typical Distance Between Structures:
approximately 800 - 900 feet

Typical Right-of-Way Width:
approximately 100 feet*



*Exact structure, height, and right-of-way requirements may vary.



We value your input. Please send comments and questions to:

Kimberly Perez • Project Outreach Specialist
AEPTexasOutreach@aep.com • 833-329-4865

[AEPTexas.com/Corichi-Victoria](https://www.aeptexas.com/corichi-victoria)

06/18/2025