

LAWTON EASTSIDE TO SUNNYSIDE 345 KV TRANSMISSION LINE REBUILD PROJECT (LAWTON - LONE GROVE TRANSMISSION LINE REBUILD PROJECT)

Representatives of Public Service Company of Oklahoma (PSO) and its affiliate, AEP Oklahoma Transmission Company, Inc. (OK Transco) plan the Lawton Eastside to Sunnyside 345 kV Transmission Line Rebuild Project (a.k.a. Lawton - Lone Grove Transmission Line Rebuild Project). The project involves rebuilding approximately 70 miles of transmission line in southwestern Oklahoma. Crews plan to start construction in summer 2026 and conclude in spring 2028.

WHAT

The project involves:

- Rebuilding the existing Lawton Eastside - Sunnyside 345-kilovolt transmission line between east Lawton and the Lone Grove area
- Making minor upgrades to associated substations

On Oct. 14, 2025, OK Transco filed an application for a Certificate of Authority with the Oklahoma Corporation Commission (Case No. PUD 2025-000069) to rebuild this line.

WHY

The existing Lawton Eastside - Sunnyside transmission line was built in 1981 with wires and poles that are near the end of their service life. Upgrading this line strengthens the local power grid in Comanche, Stephens and Carter counties.

The project:

- Replaces aging wooden poles with steel structures
- Strengthens the line against severe weather impacts
- Improves reliability by decreasing the likelihood of large, community-wide power outages

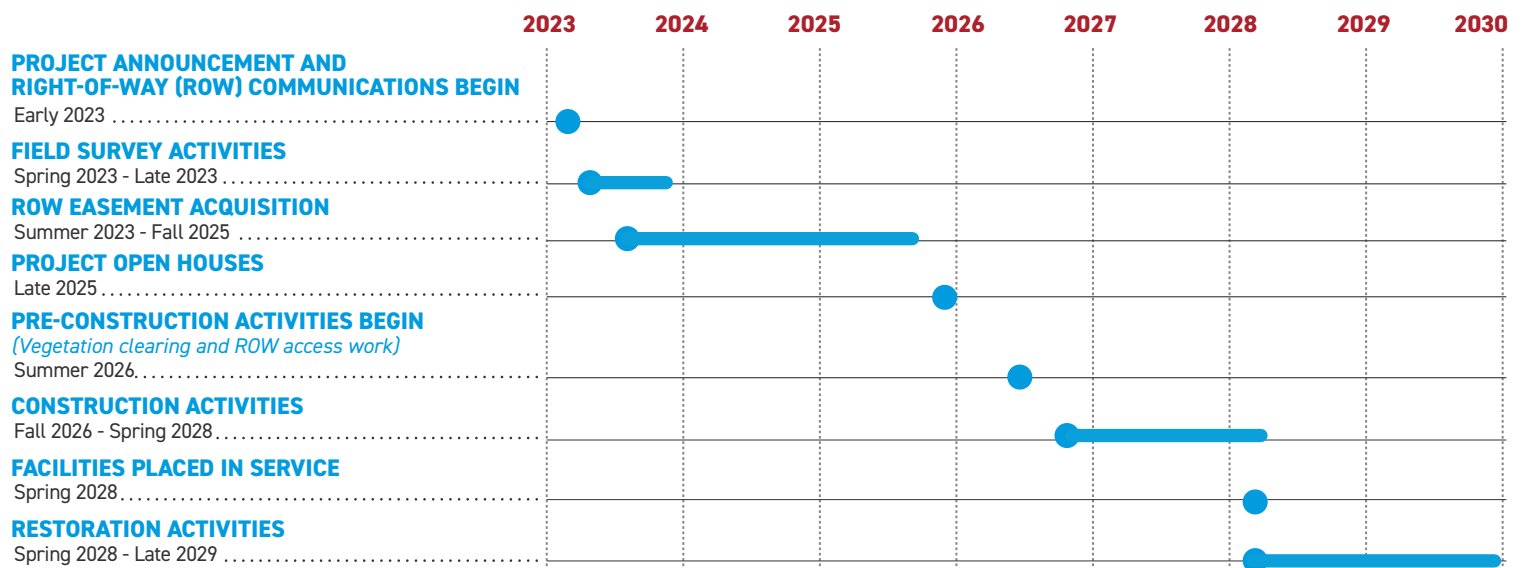
WHERE

The transmission line stretches approximately 70 miles between Lawton Eastside Substation, located in east Lawton, and Oklahoma Gas & Electric Company's (OG&E) Sunnyside Substation, located in Lone Grove.

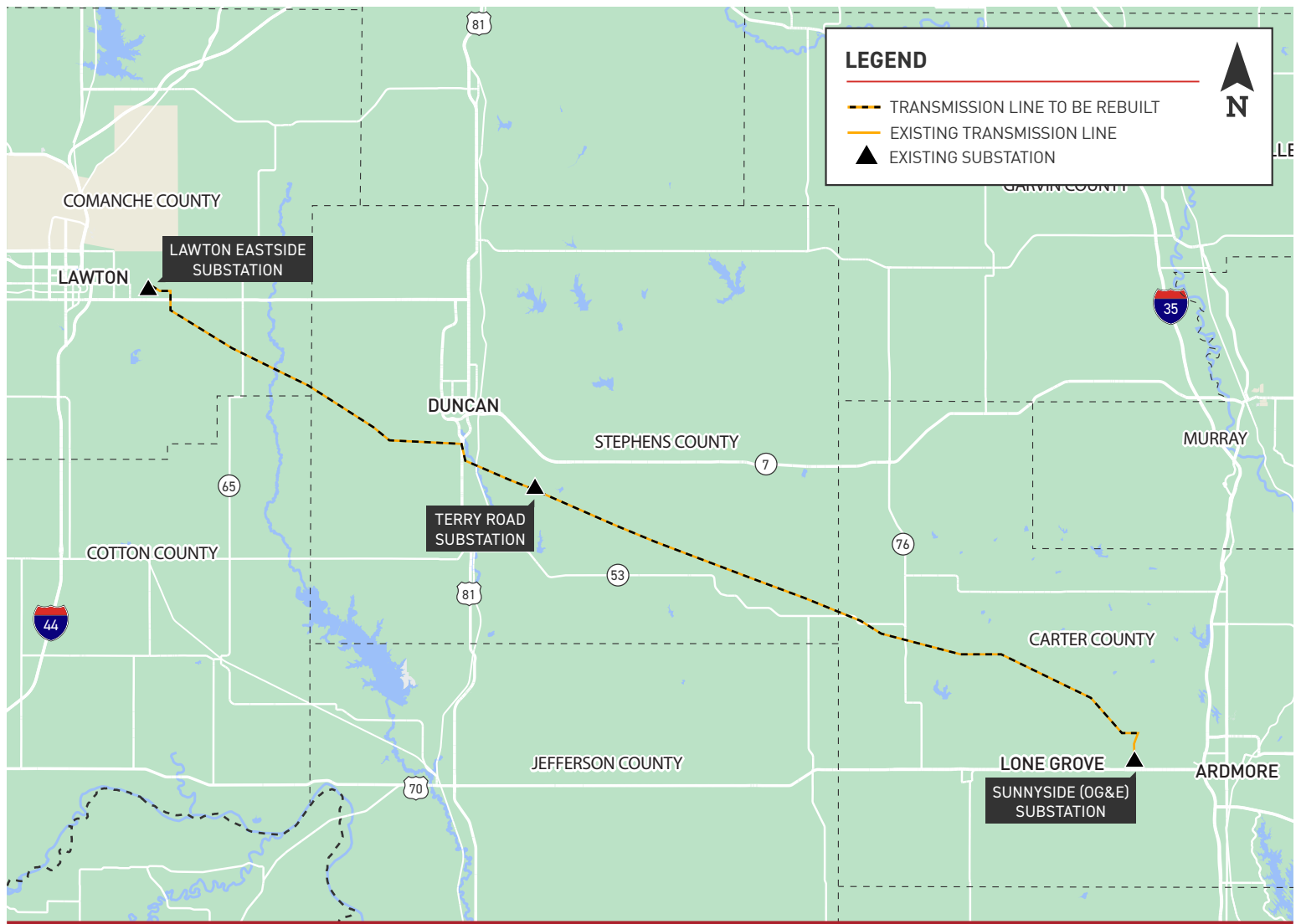
Project area includes:

- City of Lawton
- City of Lone Grove
- Comanche County
- Carter County
- City of Duncan
- City of Ardmore
- Stephens County

PROJECT SCHEDULE



*Timeline subject to change.



TYPICAL STRUCTURES

Crews plan to install steel Breakthrough Overhead Line Design (BOLD) lattice structures, which are more efficient than conventional transmission structures.

Current:

Typical Structure Height: [Approximately 80-100 feet*](#)

Typical Distance Between Structures: [Approximately 800 feet*](#)

Structure Material: [Wood](#)

Planned:

Typical Structure Height: [Approximately 110-165 feet*](#)

Typical Distance Between Structures: [Approximately 1,150 feet*](#)

Structure Material: [Steel](#)

Typical Right-of-Way Width: [150 feet*](#)

*Exact structure height, configuration and right-of-way requirements may vary



Current Structure



Planned Structure

WE VALUE YOUR INPUT. PLEASE SEND COMMENTS AND QUESTIONS TO:

MATTHEW HAMES • PROJECT OUTREACH SPECIALIST

MCHAMES@AEP.COM • 918-237-6736

PSOKLAHOMA.COM/LAWTON-LONEGROVE

**AMERICAN
ELECTRIC
POWER**

**PUBLIC SERVICE
COMPANY OF
OKLAHOMA**

An AEP Company

10/27/2025