

# ASTOR - EAST BROAD STREET

## 138-KV TRANSMISSION LINE REBUILD PROJECT



**Welcome!** Thank you for visiting our virtual open house to learn more about the project and share your input to help us develop project plans. We welcome feedback through the project website, phone, email and mail as we strive to make the most informed decisions possible.

The virtual open house includes details on the following information:

- Project Need & Benefits
- Project Map
- Engineering
- Right-of-Way Practices
- Vegetation Management
- Construction Process

# PROJECT NEED & BENEFITS



## PROJECT OVERVIEW

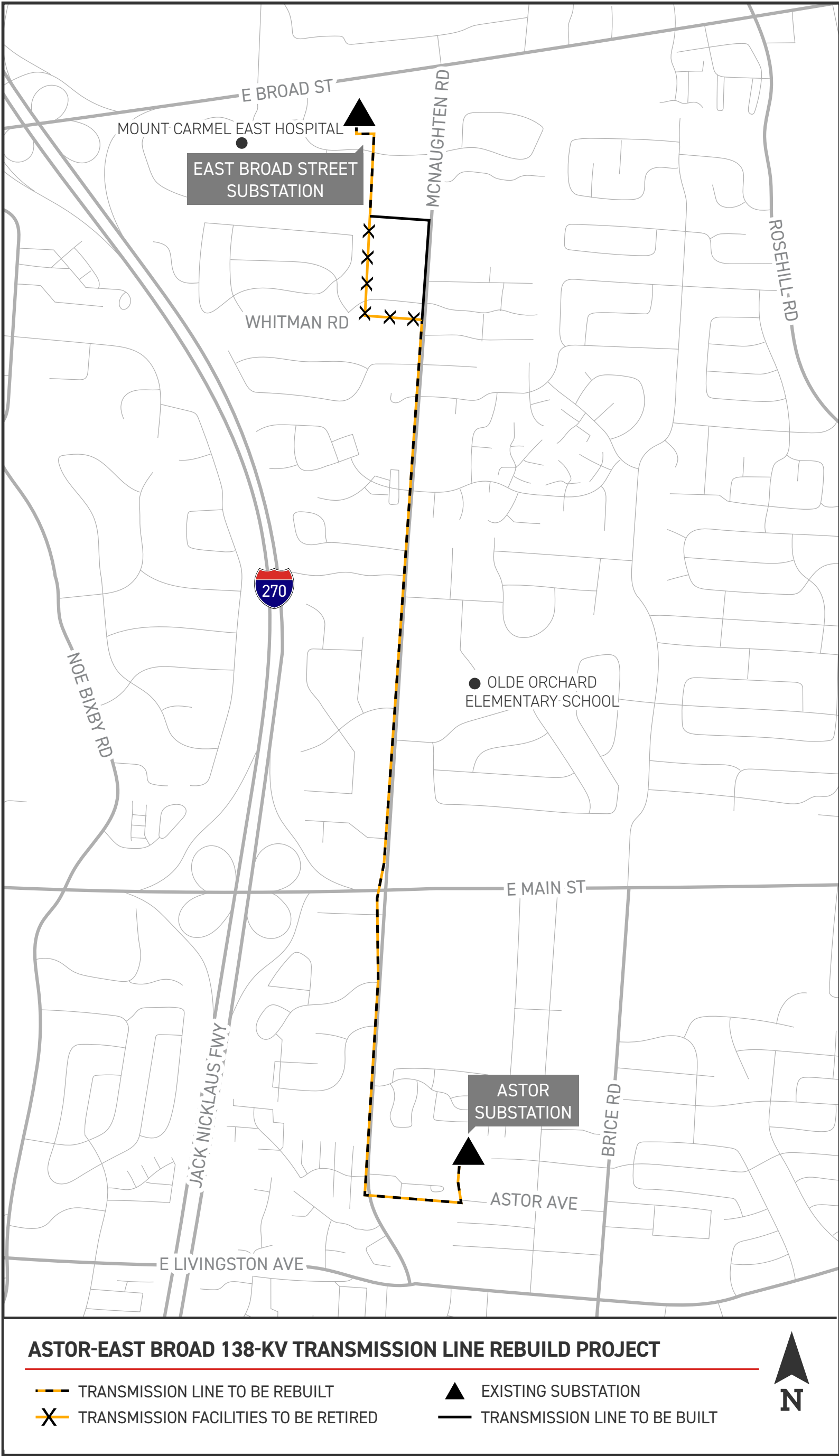
The project involves rebuilding just under 3 miles of 138-kilovolt transmission line in eastern Columbus.

## WHY IS THIS PROJECT IMPORTANT TO OUR COMMUNITY?

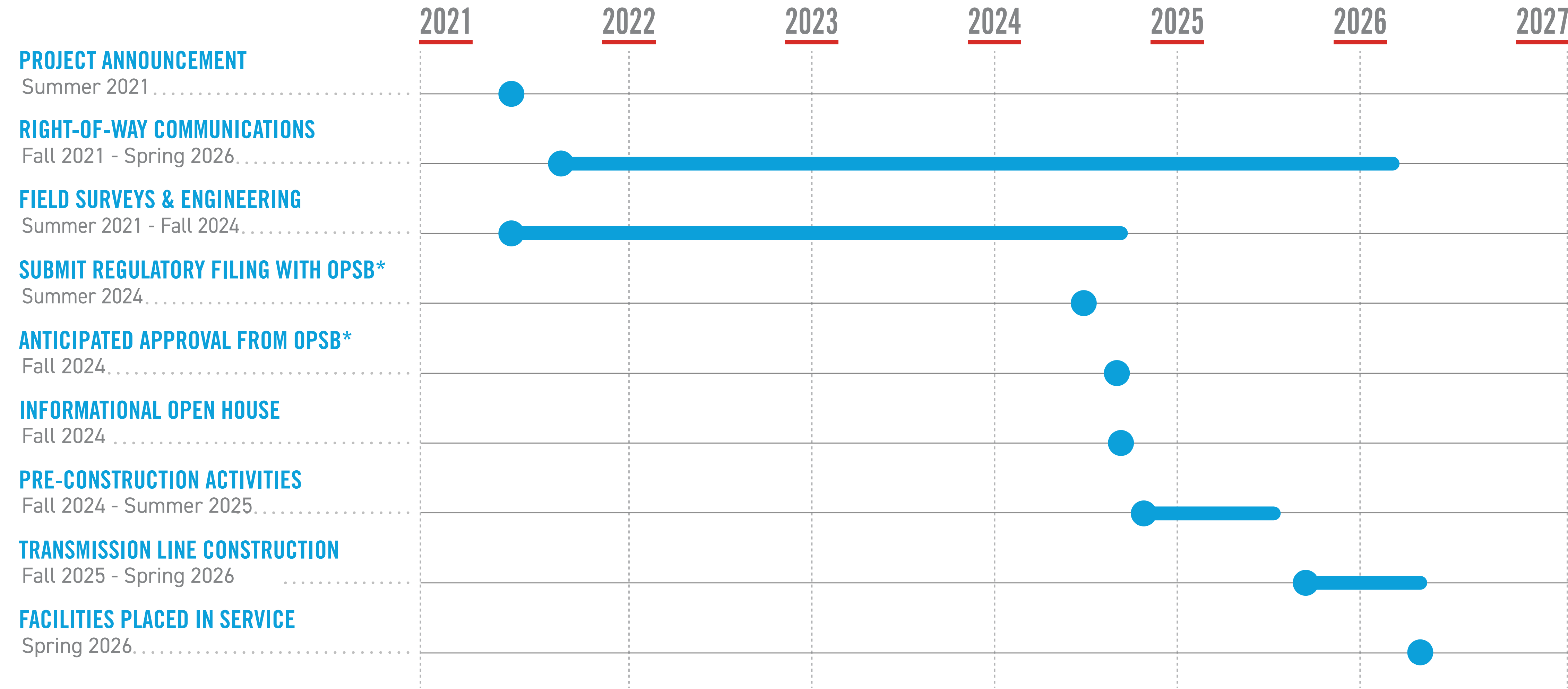
The improvements:

- Replace deteriorating wooden poles and aging infrastructure from the 1950s with modern steel poles and equipment.
- Reduce power outages and the need for frequent equipment maintenance.
- Improve electric service reliability and resiliency for area customers.

# PROJECT MAP



# PROJECT TIMELINE



\*Timeline subject to change.



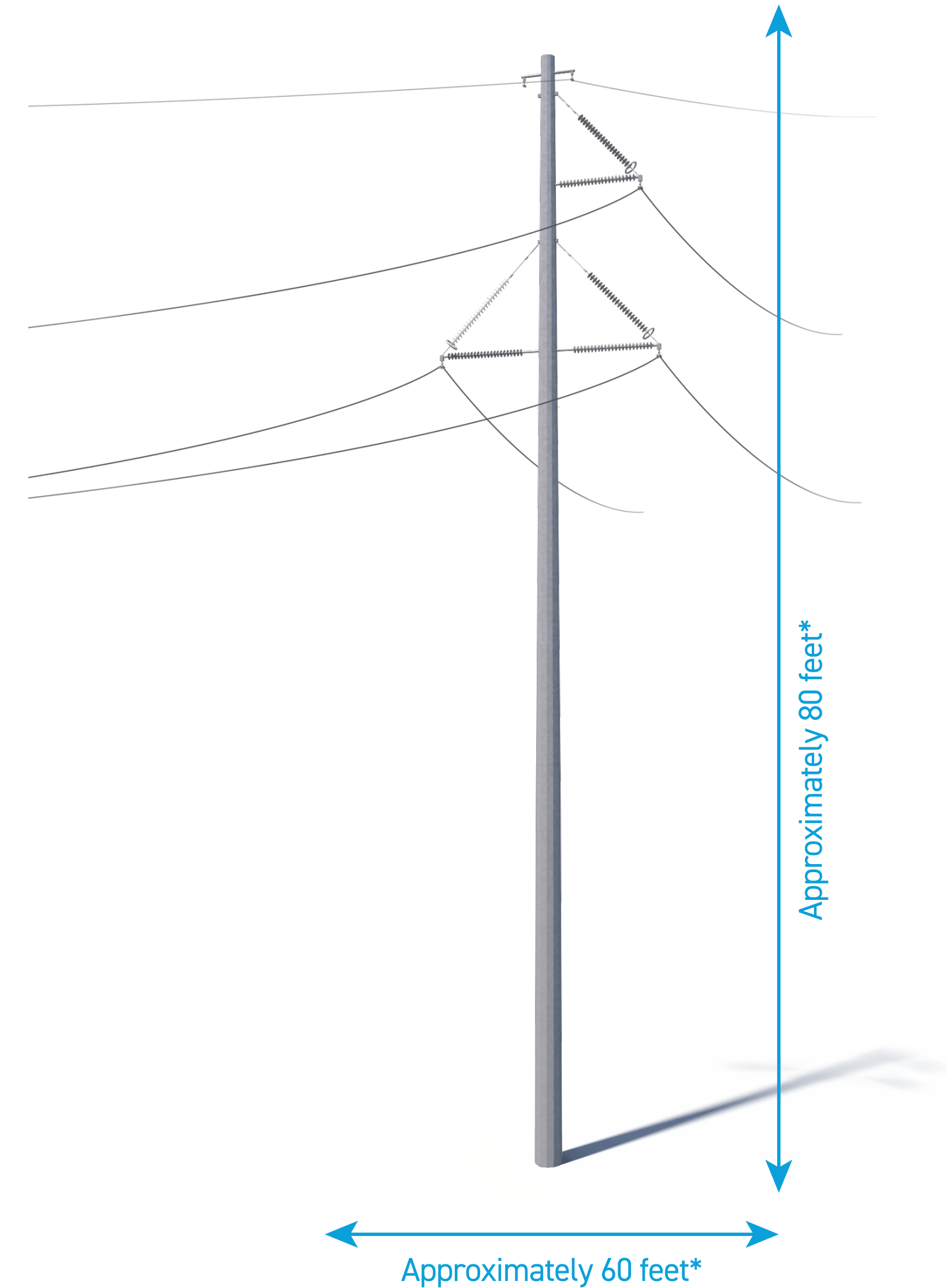
# TYPICAL STRUCTURE

The project involves the use of single steel poles.

Structure Height: **Approximately 80 feet\***

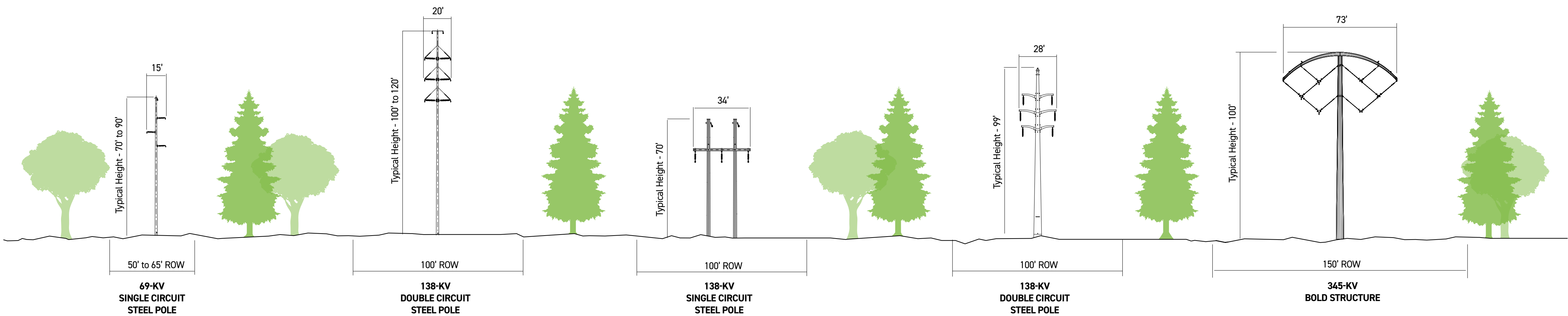
Right-of-Way Width: **Approximately 60 feet\***

\*Exact pole, height and right-of-way requirements may vary



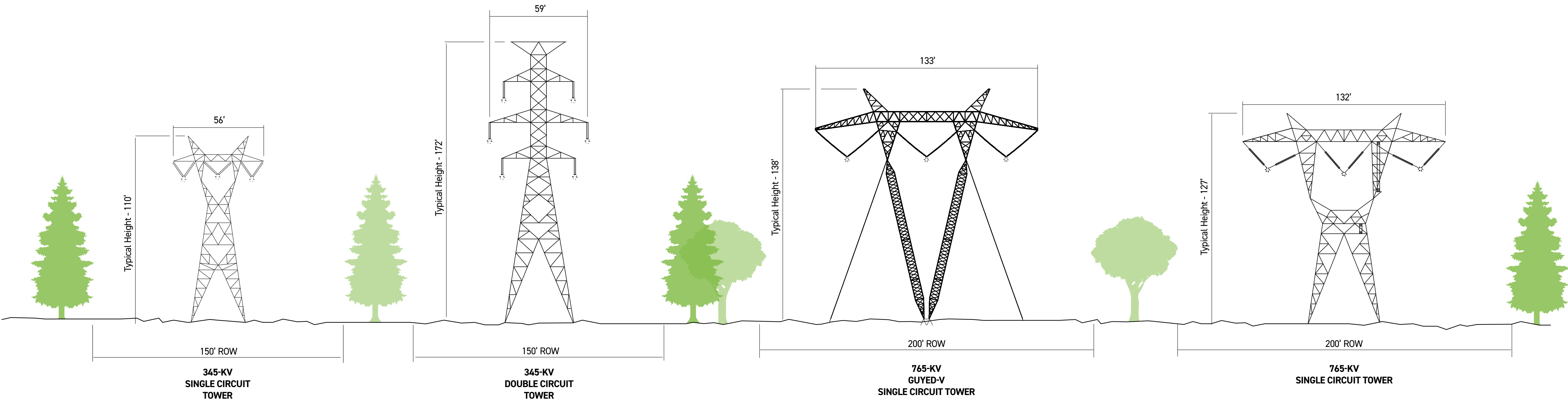
# STRUCTURE COMPARISON

Typical structure type, height, and right-of-way (ROW) width vary depending on kilovolts (kV), terrain and engineering. These structures are not to scale but are shown in proportion to one another. Structure heights are based on voltage and configuration.

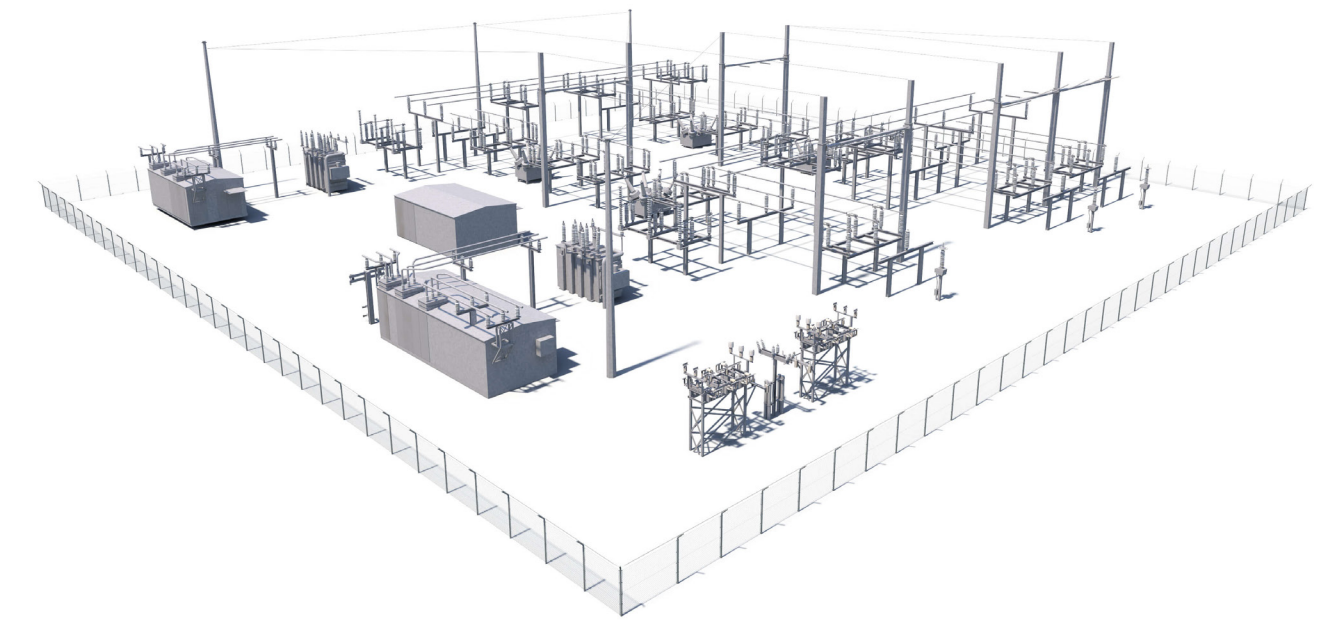
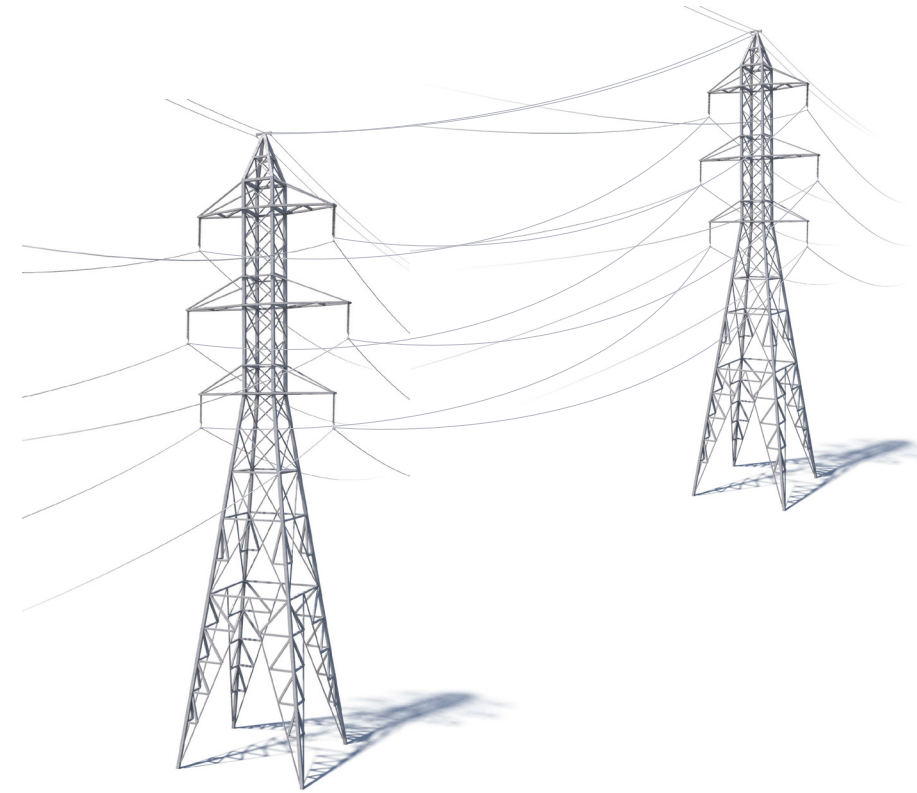
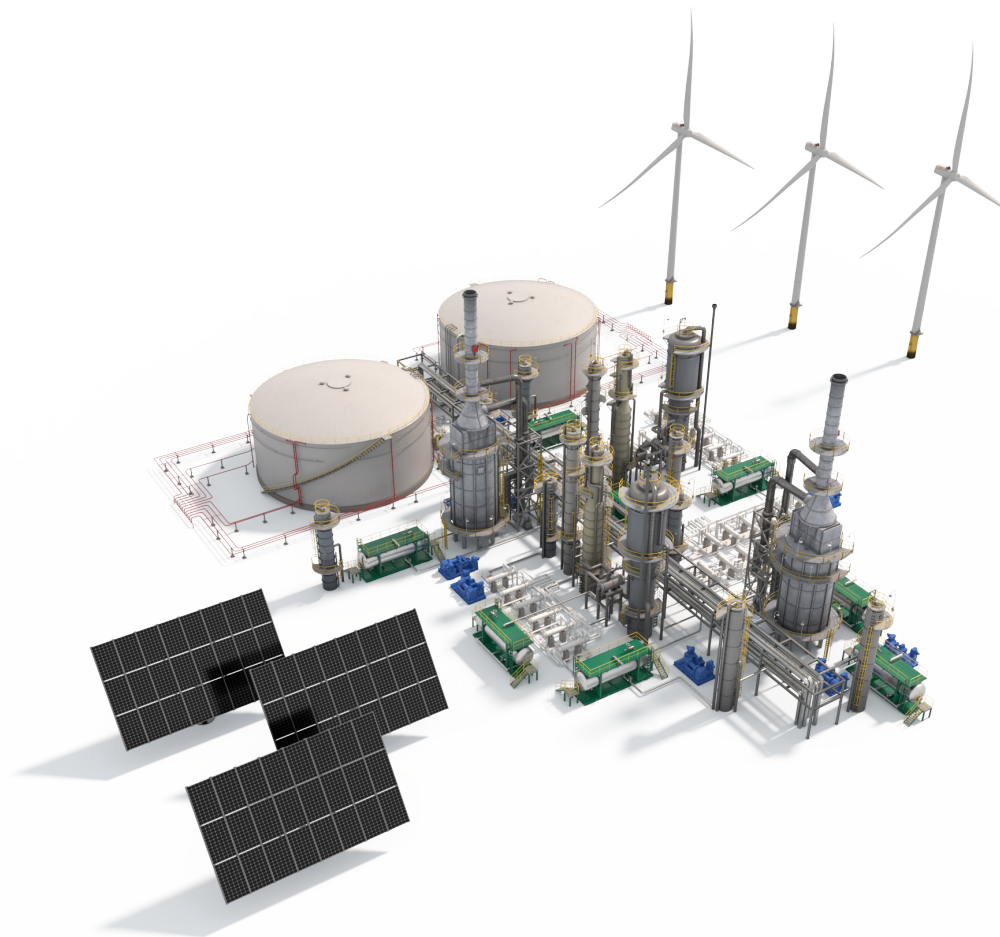


# STRUCTURE COMPARISON

Typical structure type, height, and right-of-way (ROW) width vary depending on kilovolts (kV), terrain and engineering. These structures are not to scale but are shown in proportion to one another. Structure heights are based on voltage and configuration.



# HOW THE SYSTEM WORKS



## 1. Generation Stations:

A generation station produces power to be transported long distances through transmission lines.

## 2. EHV Transmission:

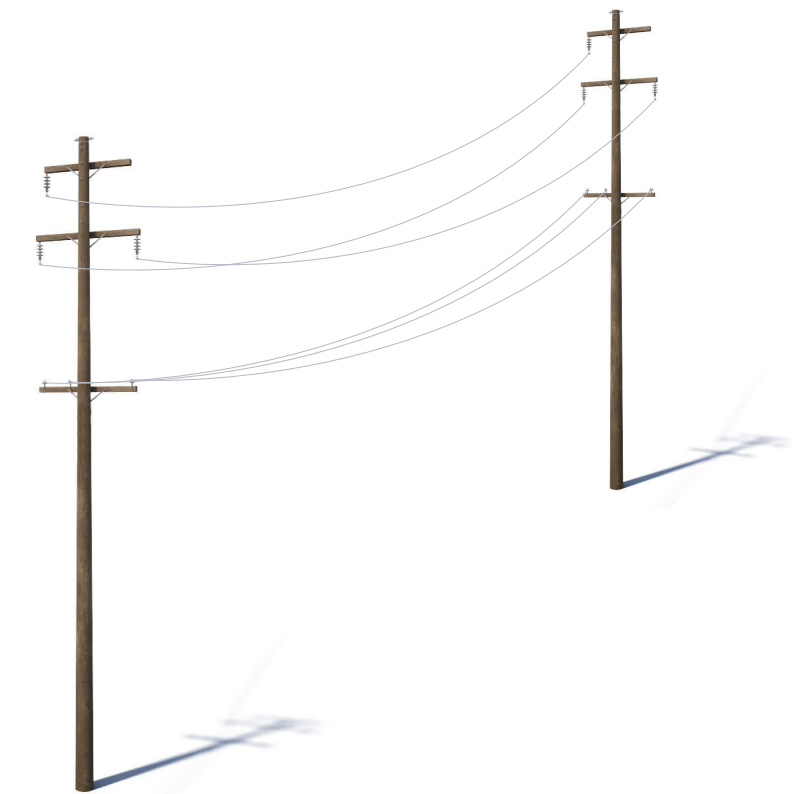
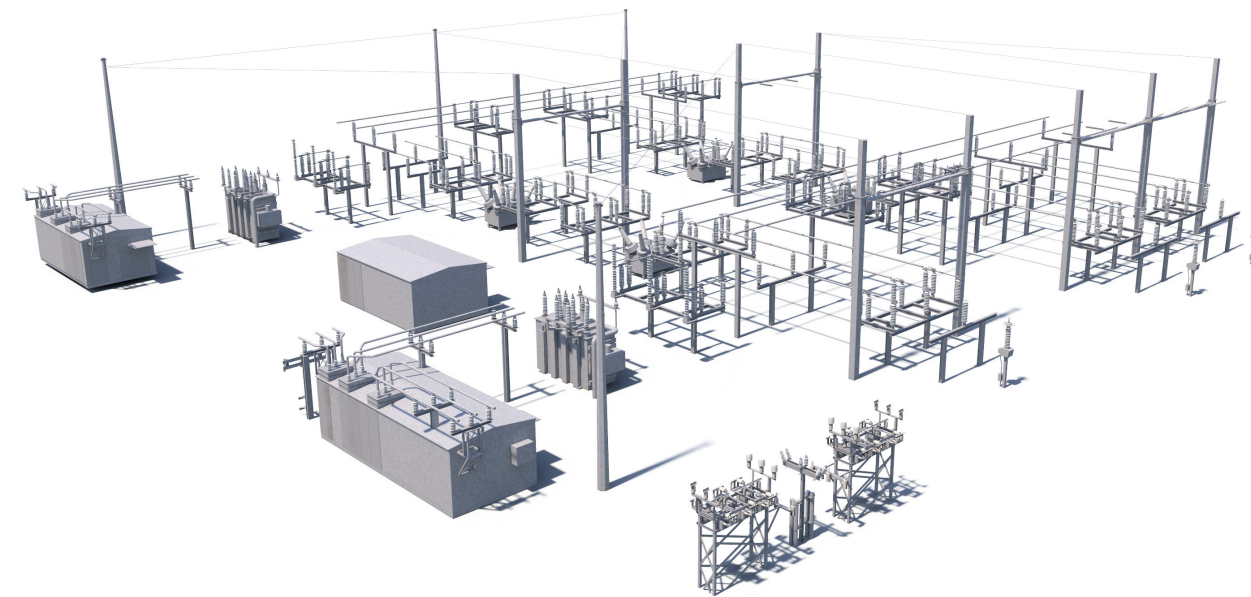
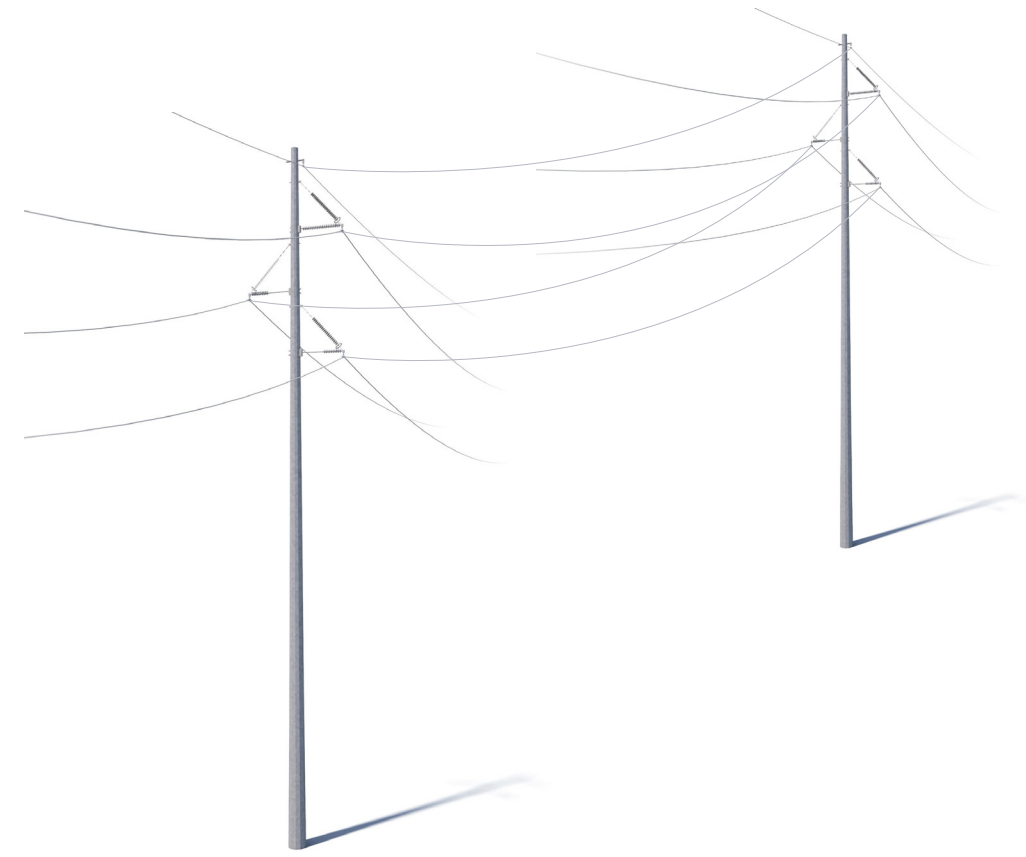
Extra-high voltage (EHV) electric transmission lines are generally 765-kilovolt (kV), 500-kV and 345-kV.

## 3. Transmission Substations:

Substations direct the flow of electricity and either decrease or increase voltage levels for transport.



# HOW THE SYSTEM WORKS



## 4. Local Transmission:

We typically use 69-kV and 138-kV transmission lines to move power shorter distances – for example, to different parts of a city or county.

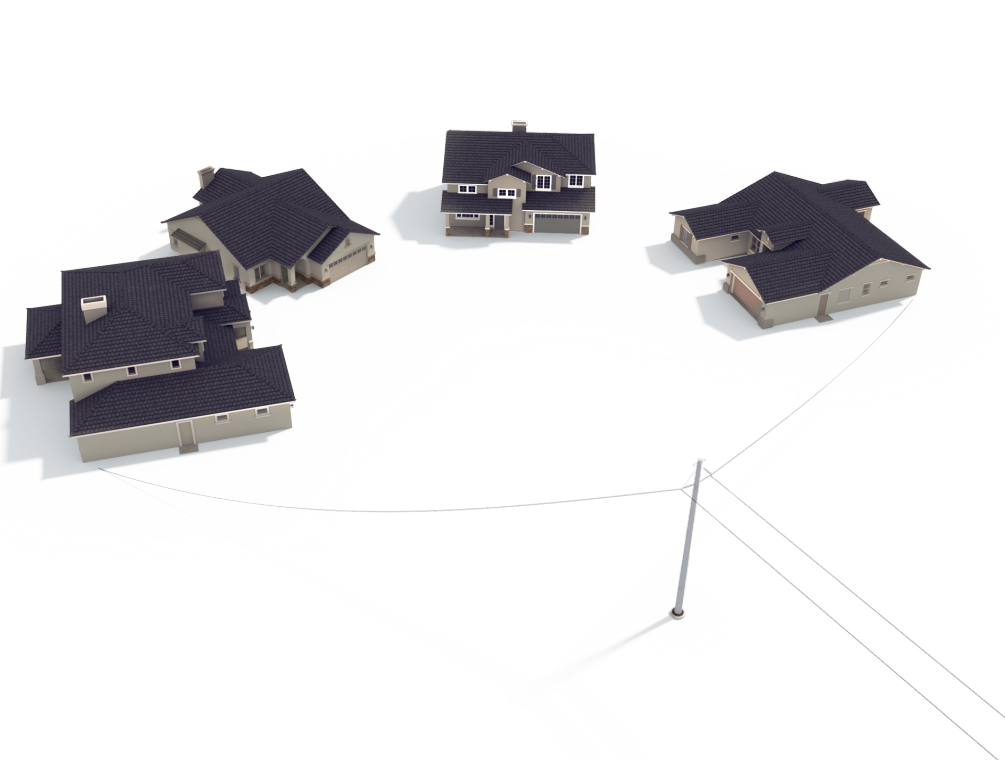
## 5. Distribution Substations:

Substations transform 69-kV and 138-kV electricity into lower distribution-level voltages such as 34.5-kV, 12-kV, or 7.2-kV.

## 6. Primary Distribution:

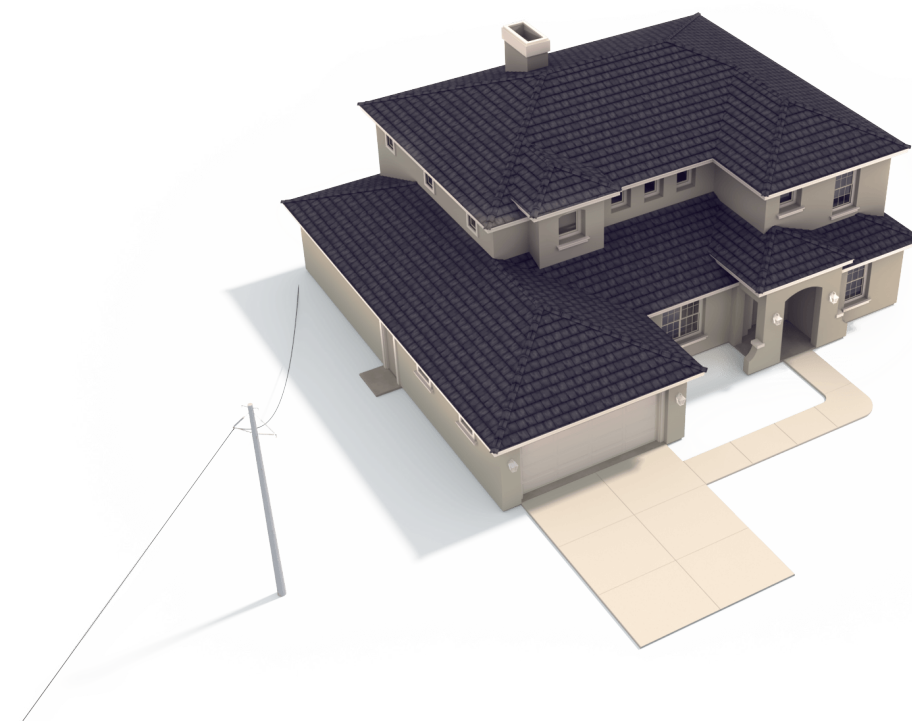
These main lines (also called circuits) connect substations to large parts of the community.

# HOW THE SYSTEM WORKS



## 7. Lateral Distribution:

These lower-capacity lines deliver electricity to neighborhoods and other smaller groups of customers.



## 8. Individual Service:

Smaller transformers step down voltage to levels customers can use. Individual homes typically use 120/240 volts.

To use an analogy, electric transmission is like our national road system. Three kinds of power lines exist between power plants, homes and businesses:

- EHV lines are like interstate highways.
- High-voltage local transmission lines are like four-lane roads.
- Distribution lines are like two-lane roads that eventually connect to a driveway.



# RIGHT-OF-WAY ACTIVITIES

We have two key philosophies regarding power line rights-of-way:

1. Routes should minimize disturbance to the community and the environment.
2. Property owners should be fairly compensated for any acquired land rights.



Once we study the land and propose line routes, we reach out to landowners for the following:

## To obtain permission to access your property for activities such as:

- Environmental assessments
- Appraisal work
- Land surveying, soil boring and other field activities
- Cultural and historical resource reviews

## To secure rights-of-way and communicate:

- Easement compensation
- Easement terms and conditions
- Right-of-way width

## To outline our construction process with a specific focus on:

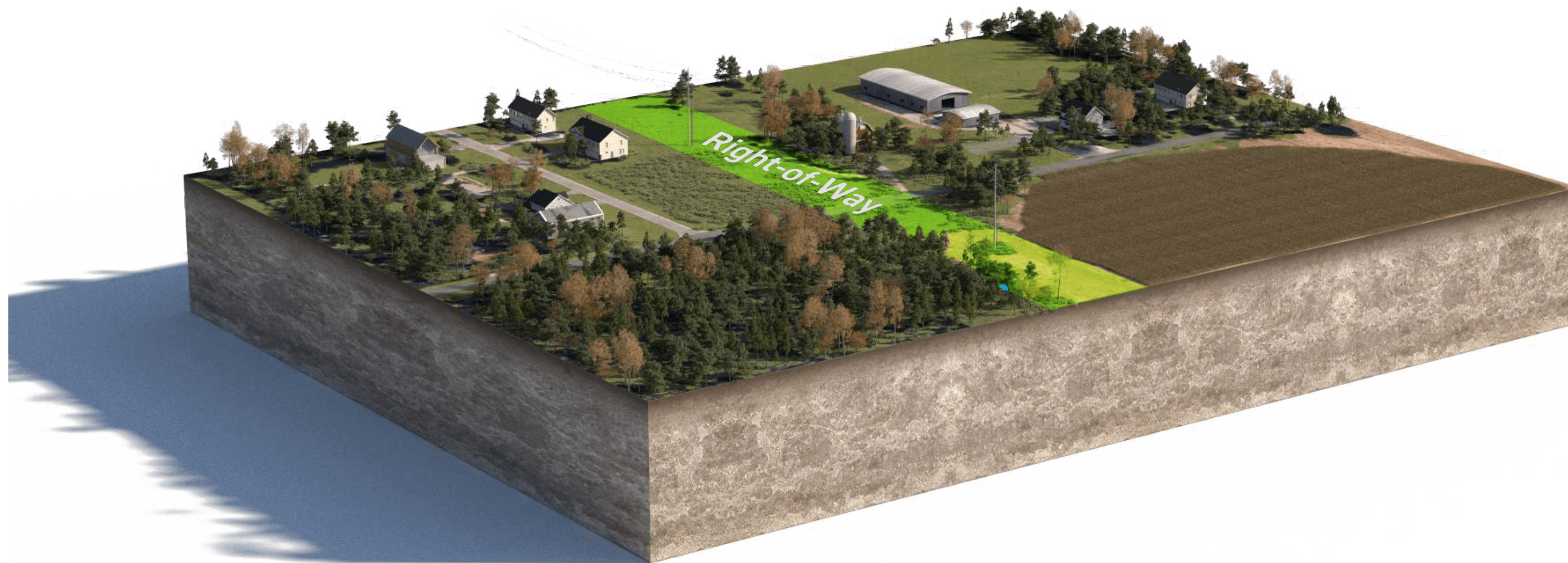
- Property access and special conditions
- Property restoration
- Damage mitigation as appropriate



# RIGHT-OF-WAY ACTIVITIES

We have two key philosophies regarding power line rights-of-way:

1. Routes should minimize disturbance to the community and environment.
2. Property owners should be fairly compensated for acquired land rights.

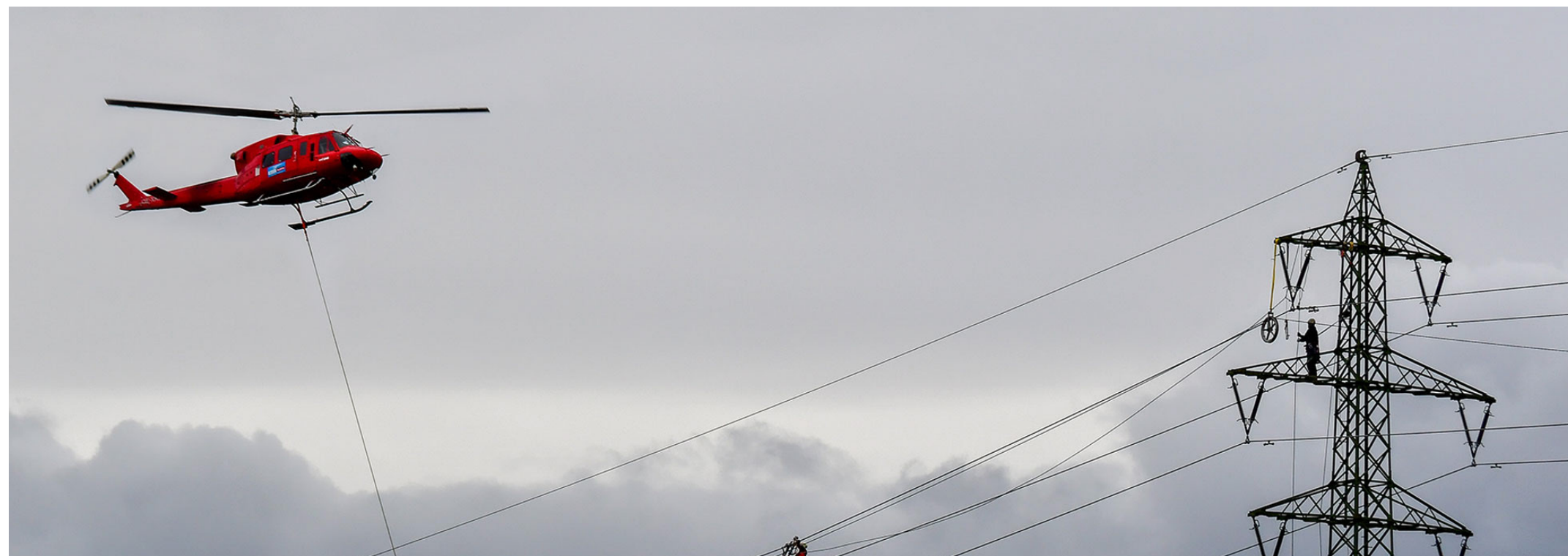




# FIELD ACTIVITIES



**Ground Penetrating Radar:** Ground Penetrating Radar (GPR) helps identify the location of underground utilities. A device that looks similar to a lawnmower, and is nondestructive to the soil, uses radio frequencies to detect objects below the ground's surface. Maps and images are created from the data.



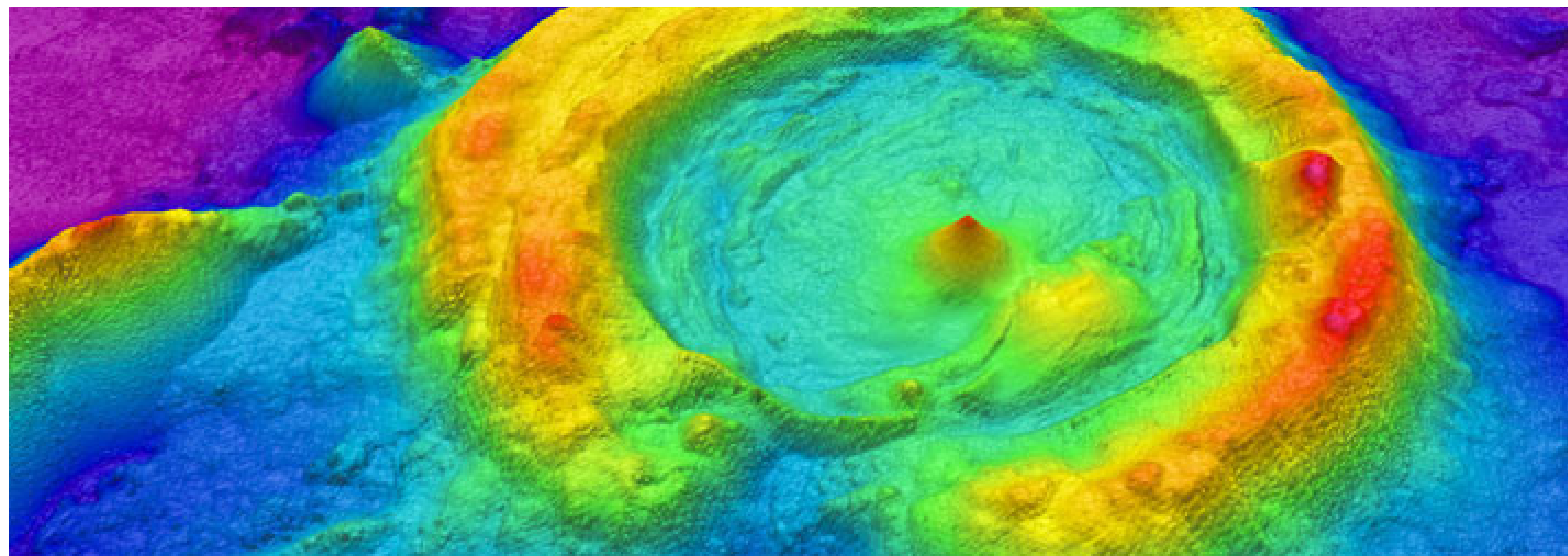
**Helicopter:** Challenging terrain or other restrictions/obstructions can make accessing certain parts of a project area difficult. In these locations, crews use helicopters to install structures, string conductors, perform line work and maintain electric facilities. Company representatives work with local media outlets to communicate these activities to the public.



# FIELD ACTIVITIES



**Hydro Excavation:** Crews use hydro excavation (hydrovac) in areas where many underground utilities are located near each other. This process involves using pressurized water to break down soil to expose underground utilities. Afterward, crews backfill the area. The process helps prevent damage to underground infrastructure while gathering important information.



**LiDAR:** LiDAR (Light Detection and Ranging) uses laser pulses to measure the distance of an object to the source. The data points result in digital 3D maps for accurate design and engineering. LiDAR surveying crews use mobile (car or aerial vehicle) or static (tripod) equipment.



# FIELD ACTIVITIES



**Soil Borings:** Field crews use a drill to bring up soil samples and then backfill the holes. Testing the core samples helps determine soil conditions in the area. Soil conditions and types can affect structure location and foundation design.



**Cultural Resource Study:** Field crews walk the area and conduct multiple excavation tests to identify historical and archaeological artifacts. Landowners also provide information about their property to survey crews.



# FIELD ACTIVITIES



**Environmental Survey:** Surveyors collect information about the habitats and physical attributes of the project area. They also look for ecological concerns like wetlands, flood plains and forests. This process can help protect endangered species, such as the Indiana Bat and American Burying Beetle.



**Unmanned aerial vehicles:** Unmanned aerial vehicles (UAVs), or drones, perform aerial inspections and safely gather data and detailed images of electric facilities. Company employees and vendors comply with all commercial Federal Aviation Administration (FAA) guidelines. Company representatives work with local media outlets to communicate these activities to the public.

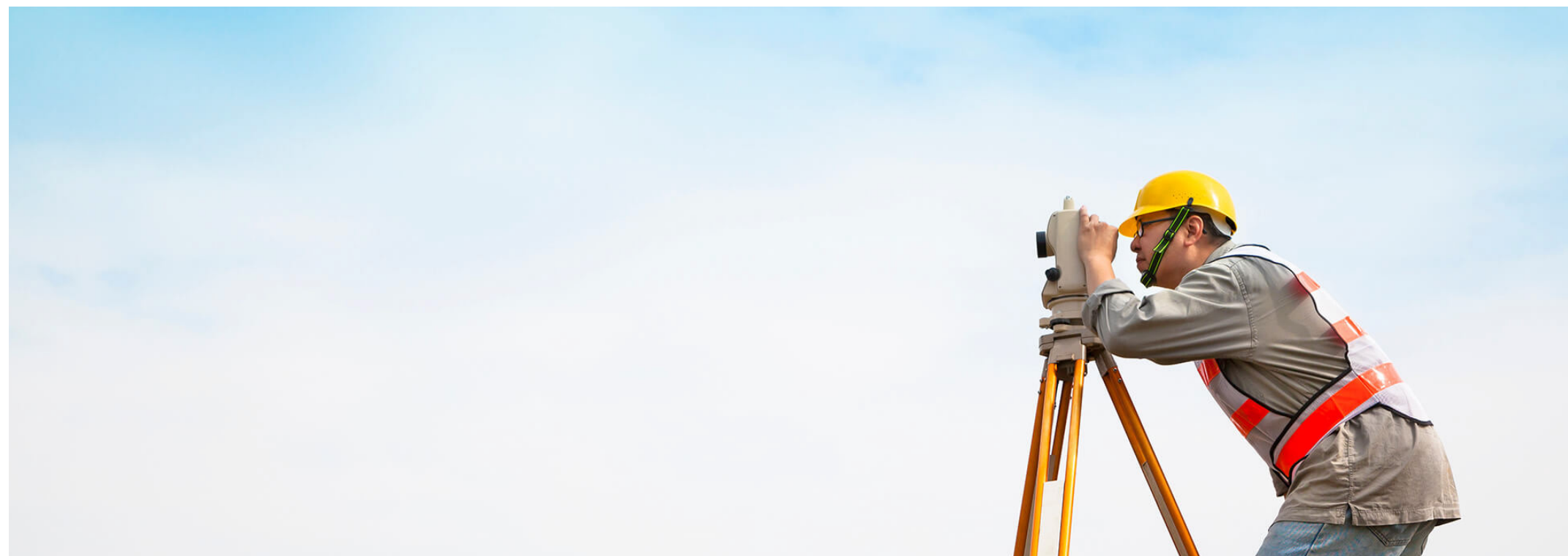


# FIELD ACTIVITIES



## Staking:

- Field crews use staking to mark the project area, identify utility equipment and pinpoint future structure locations. This process essentially transfers engineering and construction plans to the field.
- Right-of-way crews use staking to identify parcel boundaries, easement boundaries and other utility locations within the company's rights-of-way.
- Environmental crews use staking to identify wetlands or other environmentally sensitive areas.



## Field Survey:

- Field survey crews help determine an appropriate route for a new transmission line by identifying constraints within the project area.
- Engineers conduct extensive studies of the terrain and soil to determine what types of structures and foundations are most suitable. They also gather information to create digital 3D maps of the project area to help engineer and design the project.



# VEGETATION MANAGEMENT

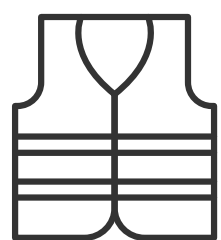


**What is vegetation management?** AEP's vegetation management approach involves controlling the growth of trees and other vegetation in transmission rights-of-way, the sections of land where transmission power lines are located.

AEP Transmission's vegetation management program helps balance the need for reliable service with respect for the natural environment. The company uses contract forestry crews to complete vegetation management work.

**Why is it done?** To reduce power outages caused by trees and other plants contacting power lines.

**Our vegetation management program aims to:**



Work safely and efficiently



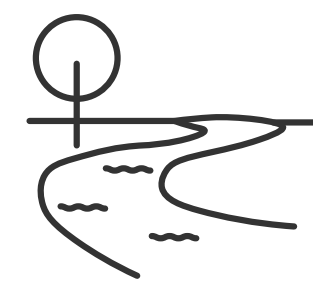
Protect the electric grid and reduce power outages



Foster positive relationships with customers and communities



Comply with federal, state and local regulations



Minimize negative impacts to the environment

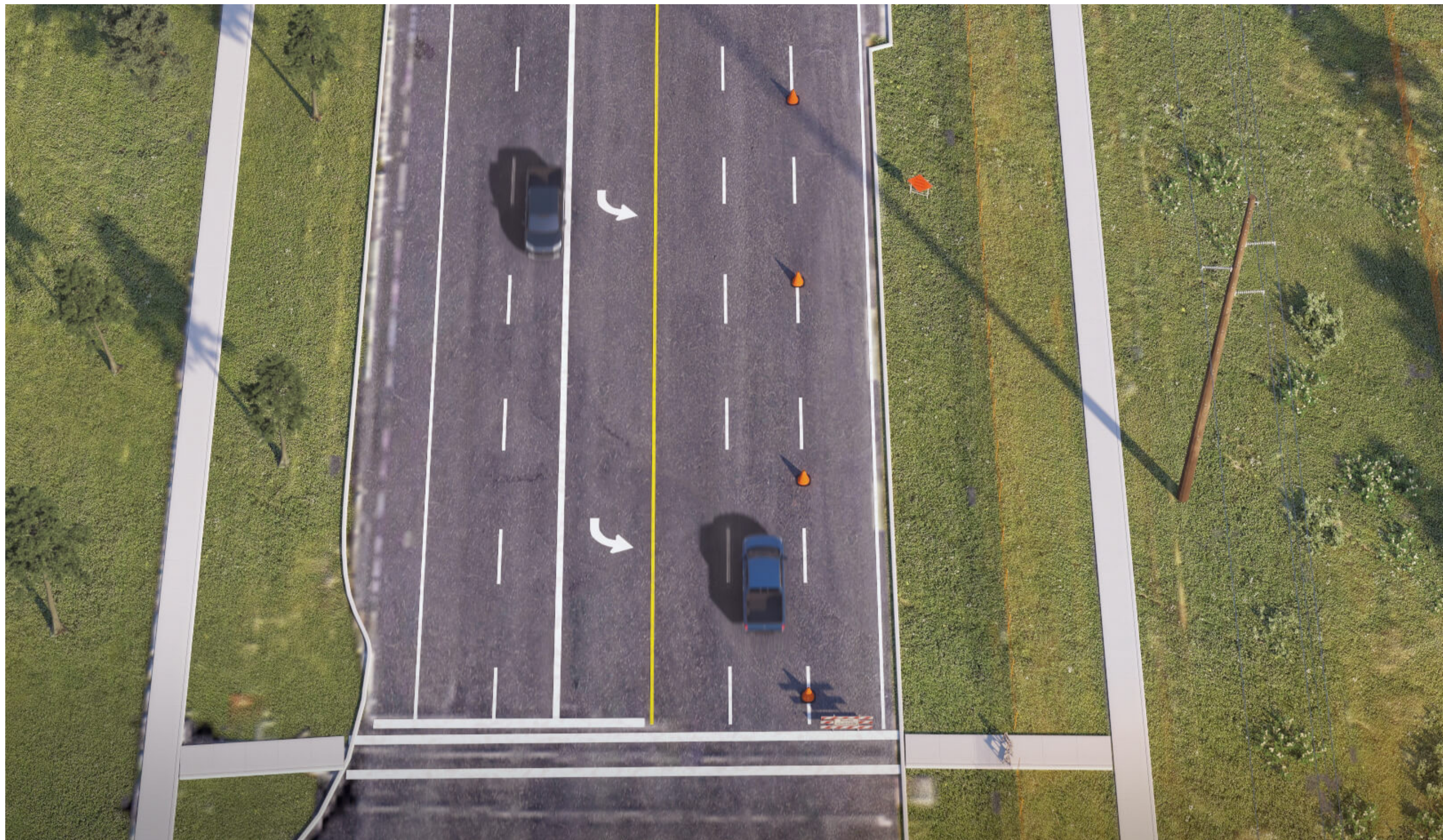
The North American Electric Reliability Corporation (NERC) sets standards that require utilities to establish minimum clearance distances between transmission lines and the nearest vegetation. Non-compliance can lead to significant community-wide power outages.

- Crews may clear identified danger trees outside the right-of-way as allowed per easement language.
- When possible and practical, crews use selective clearing practices to retain low-growth shrubs and bushes.

\*Landowners should speak with a company representative to identify plants that are safe to place in the right-of-way.



# WHAT TO EXPECT DURING CONSTRUCTION



## **Construction Corridor Development**

### **Crews prepare for construction by:**

- Building access roads.
- Marking utilities and pole locations along the power line route using stakes and flags.
- Removing obstructions from the right-of-way easement area.
- Installing safety and environmental controls such as fencing.

### **As part of this process, crews clear the right-of-way:**

- Forestry crews prepare for transmission line construction by clearing trees and woody-stemmed vegetation from the right-of-way.
- Crews may clear identified danger trees outside the right-of-way as allowed per the easement language.



# WHAT TO EXPECT DURING CONSTRUCTION



## Pole Installation

At most pole locations, crews:

- Assemble the new pole and place it near the installation area.
- Remove existing wires and other equipment from the existing poles.
- Remove the existing poles.
- Install and stabilize the base of the new pole.
- Install and secure the new pole.



# WHAT TO EXPECT DURING CONSTRUCTION



## Wire Installation

Crews install new wires on the new poles along the power line route.



# WHAT TO EXPECT DURING CONSTRUCTION



## Facilities Placed In Service

Crews energize the equipment after finishing pole and wire installations.

## Post-Construction & Site Restoration

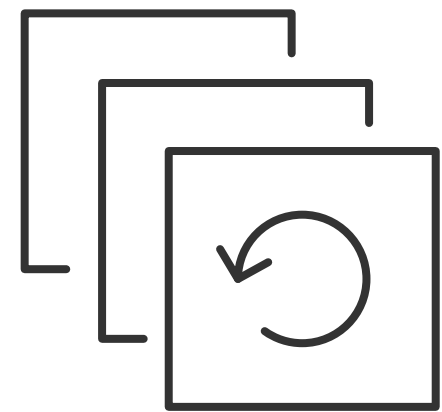
We restore properties to as close to their pre-construction condition as possible. Our teams work with individual landowners to address property any damage.



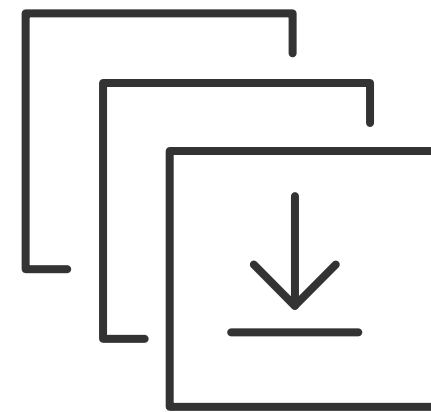
# THANK YOU!



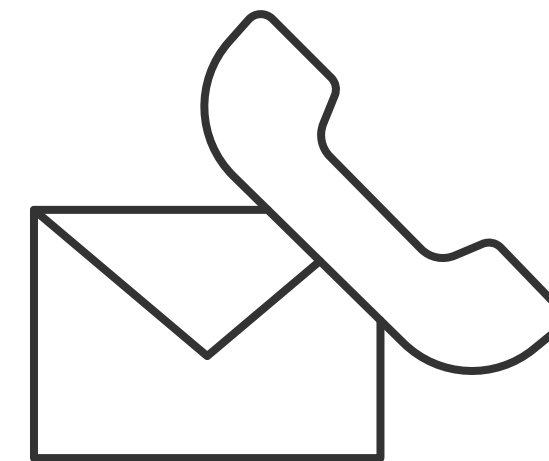
Thank you for visiting the project virtual open house. For more information and project updates please visit the project website, or contact us with any additional questions.



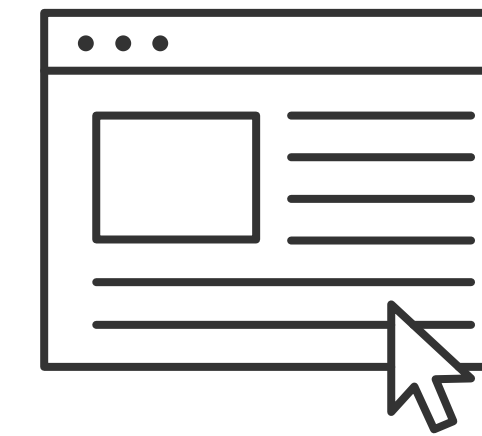
**Replay  
Open House**



**Download  
Slide Deck**



**Contact Us**



**Visit Project  
Website**