

DYESS - FLINT CREEK TRANSMISSION LINE REBUILD PROJECT

Southwestern Electric Power Company (SWEPCO) representatives plan to rebuild approximately 10.5 miles of electric transmission line in Benton and Washington counties. This project strengthens the local electric system and provides more reliable service in northwestern Arkansas. Crews plan to start construction in early fall 2026 and conclude in spring 2027.

WHAT

The project involves:

- Rebuilding approximately 10.5 miles of 161-kilovolt transmission line
- Making minor upgrades to area substations

WHY

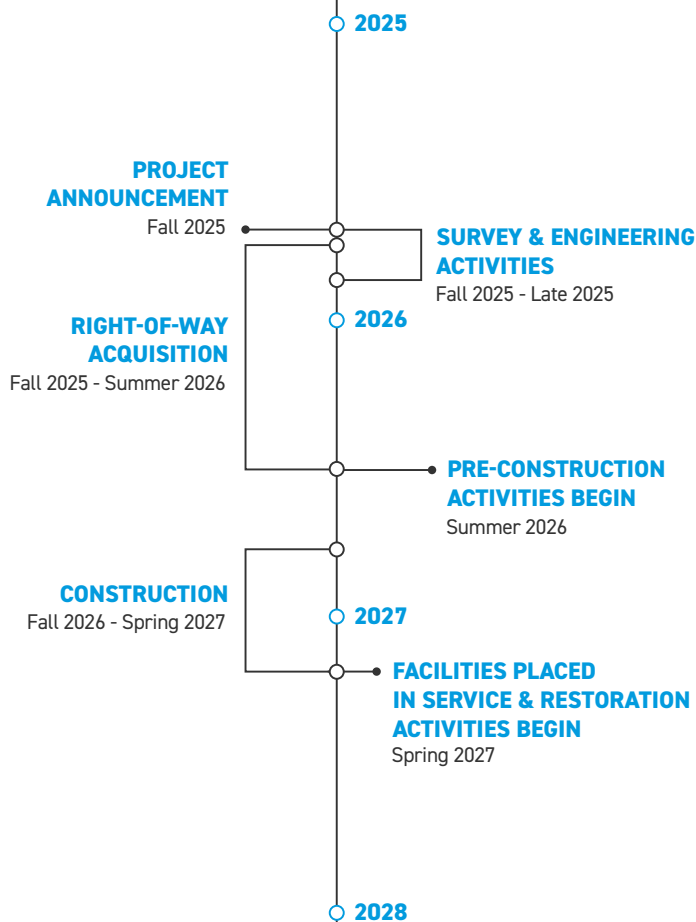
The existing Dyess - Flint Creek transmission line was originally built in 1975. Portions of this line have already been rebuilt and this project seeks to replace the remaining wooden structures with steel poles.

The project:

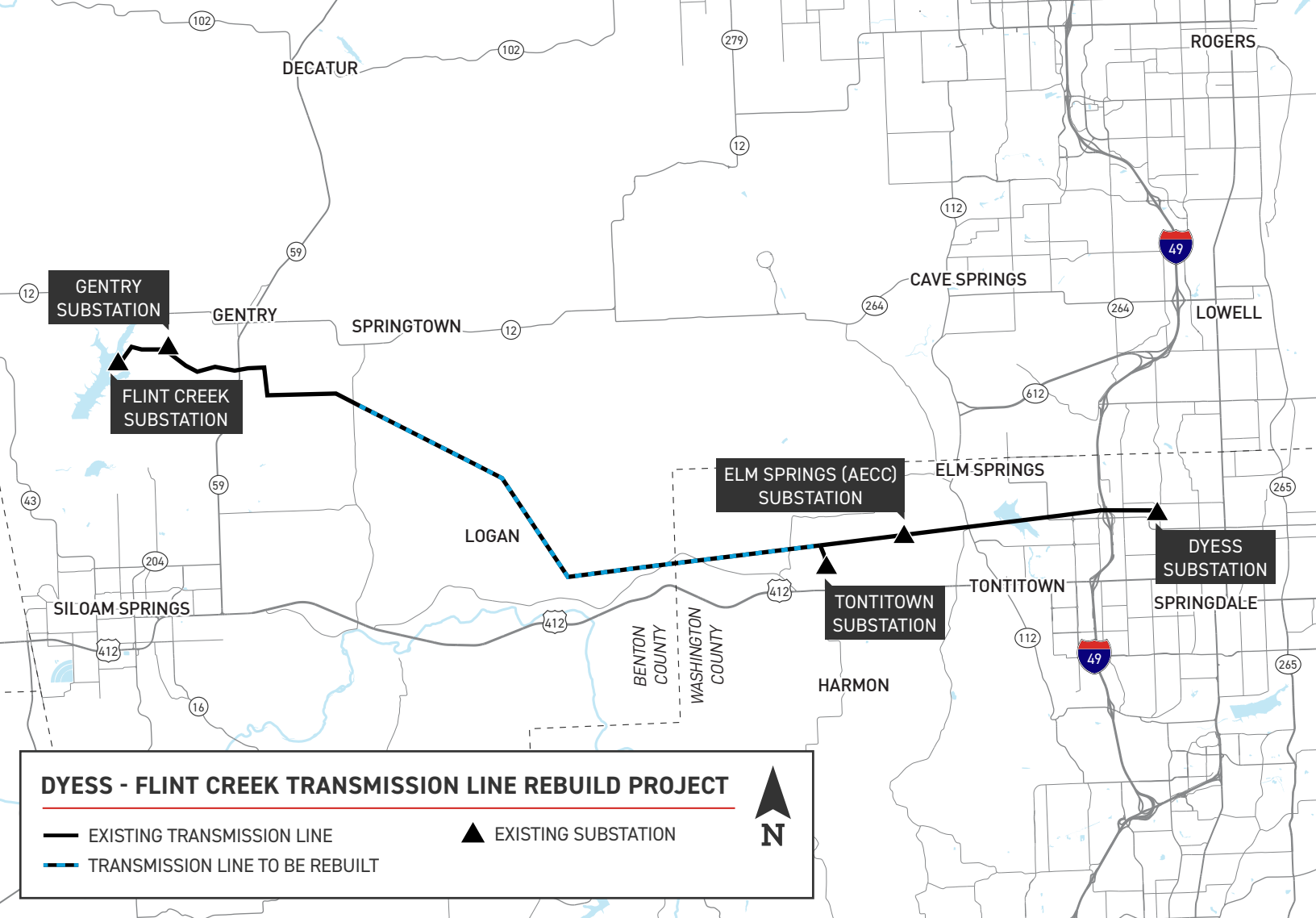
- Enhances electric reliability for customers and upgrades the local power grid
- Replaces deteriorating wooden poles with modern steel poles to strengthen the line against severe weather impacts and reduce frequent maintenance
- Upgrades equipment to accommodate future development in the region

WHERE

The transmission line to be rebuilt stretches between the Dyess Substation, located in Springdale off Backus Avenue, and the Flint Creek Substation, located in Gentry by the Flint Creek Power Plant.



Timeline subject to change.



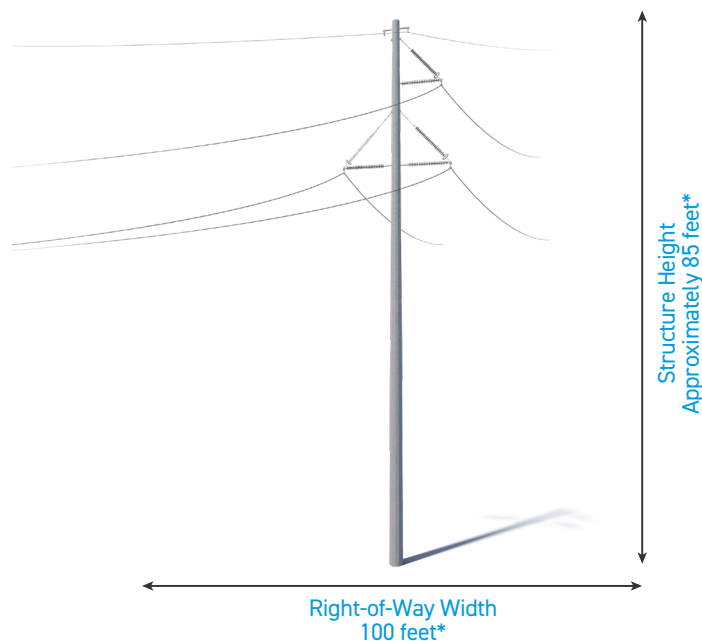
TYPICAL STRUCTURES

Crews plan to install steel single-pole structures.

Typical Structure Height: **Approximately 85 feet***

Typical Distance Between Structures: **Approximately 700 feet***

Typical Right-of-way Width: **100 feet***



*Exact structure design, height, and right-of-way requirements may vary.

WE VALUE YOUR INPUT. PLEASE SEND COMMENTS AND QUESTIONS TO:

MATT HAMES • PROJECT OUTREACH SPECIALIST

MCHAMES@AEP.COM • 918-237-6736

SWEPCO.COM/DYESS-FLINTCREEK